

OIL SIGHT GLASS

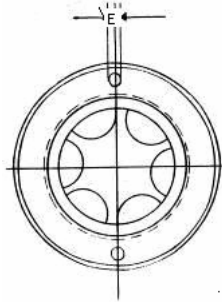
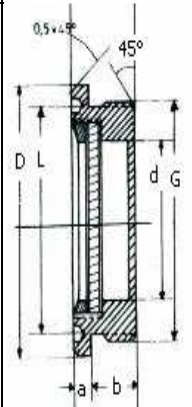
R.OPG.240/TH Oil sight glass of messing, 130°C

R.OPG.240/TH-T Oil sight glass of tempaxglass, 4 mm, up to 300°C

Sight glass made of natural glass, .

Body and reflector made in one piece. Oil must be drained when screwing the sight glass

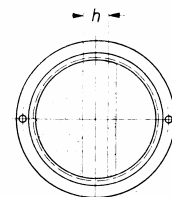
Ø R	1/4"+3/8"	1/2"	3/4"		7/8"	1"		1 1/4"	1 1/2"	2"
Ø M	16x1.5	18x1.5 20x1.5	22x1.5 24x1.5	26x1.5 27x1.5	30x1.5 30x2.0	33x1.5 33x2.0	35x1.5 36x1.5	42x1.5	48x1.5	60x2
D	22	26	32	32	36	38	42	48	55	69.5
d	9.1	11.6	16.1	16.1	20.1	22.1	25.1	28.1	33.1	43.1
L	18	21.5	27	27	30.5	33	35.5	40	47.5	60
a	4	4	4	4	4.5	4.5	4.5	4.5	5	5.5
b	8	8	8	8	8.5	9	9	10	11	11
c	12	12	12	12	13	13.5	13.5	14.5	16	16.5
e	2.6	2.6	2.6	2.6	2.6	2.6	2.6	3.2	3.2	4.5
max druk TH	60	30	10	10	8	5	5	5	5	5
max druk TH-T	120	60	20	20	16	10	10	10	10	10



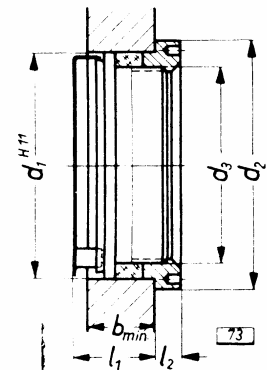
R.OPG.240/LOE

Oil sight glass LOEWE nr 324.01, made of solid plexiglass

Ring closure can withstand oil and petrol, with polished unscrewable aluminium ring and nickled removable reflector. For pressureless oil reservoirs. Can withstand temperatures up to 80°C. ISO H11 compliant. Available with red oil mark: Attach "R"



GROOTTE (mm)	d1 mm	d2 mm	d3 mm	l1 mm	l2 mm	b mm	h mm
16	20	25	M 16x1	15	3	9	5
22	28	35	M 22x1	15	4	10	6
32	38	45	M 33x1	18	5	12	8
50	58	64	M 50x1	22	5	14	10



Subject to change